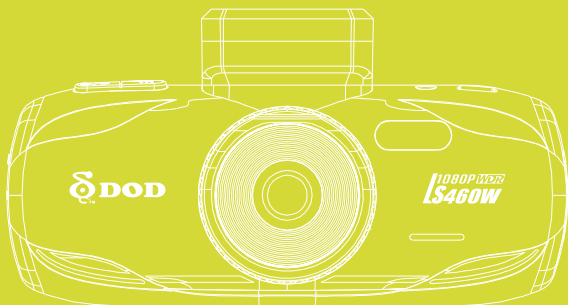


DOD
™ www.dod-tec.com



LS460W

USER MANUAL

Copyright © 2014 DOD Tech
All Rights Reserved

CONTENTS

IMPORTANT SAFETY INSTRUCTION	2
PACKAGE CONTENTS	3
CONTROLS AND FUNCTIONS	4
INSTALLATION AND CONNECTION	6
GETTING STARTED	7
INTRODUCTION OF OTHER FUNCTIONS	12
ON-SCREEN DISPLAY (OSD) MENUS	14
ADDITIONAL INFORMATION	16



IMPORTANT SAFETY INSTRUCTION

About the Product

- Please do not install the product in places that may cause interference while driving.
- Please do not install the product in a highly humid environment.
- Due to high temperatures during summer, please do not expose the product to long period of time, because it may reduce the product's lifespan.
- Please avoid fierce impact upon the product.
- If the unit is damaged or malfunctions, don't open it and don't attempt to repair it. Please contact DOD or DOD authorized local dealer.


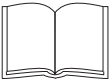





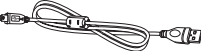
About the car charger

- **Only use the car charger provided by manufacture, others might cause malfunctions or danger.**
- To avoid damage, please do not constantly plug in and remove the car charger.
- Ensure it is connected to a proper power source. The voltage requirements are described on the car charger.
- Please do not touch the car charger with wet hands.
If the car charger is damaged, it should be replaced immediately. Please do not try to fix it on your own.

About the Battery

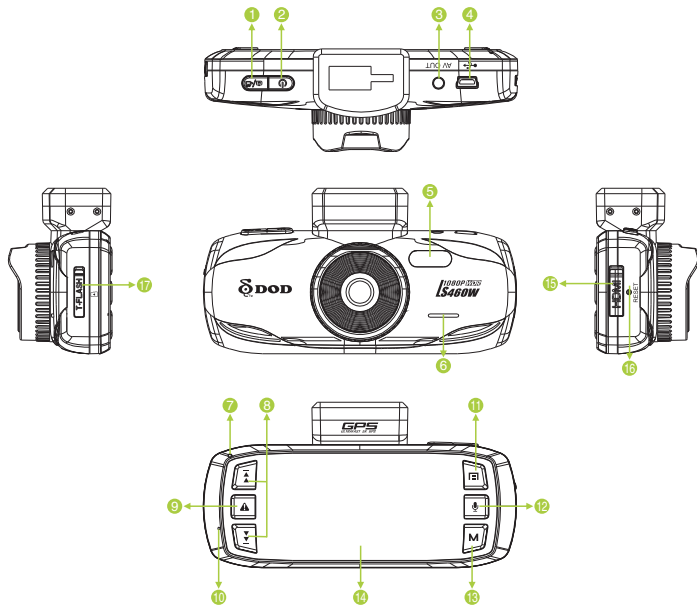
- Only use the battery approved by the manufacturer.
- There is a built-in battery, please avoid usage in high-temperature environments.
- Please keep the device dry and store it at lower temperature if it is not in use. When the device couldn't be turned on, please connect to power supply for a few minutes before turn on the device.

PACKAGE CONTENTS

<p>1</p>  <p>Host computer</p>	<p>2</p>  <p>User manual</p>	<p>3</p>  <p>Stand</p>
<p>4</p>  <p>CD</p>	<p>5</p>  <p>Car charger</p>	<p>6</p>  <p>Paste stand</p>
<p>7</p>  <p>HDMI Cable(optional)</p>		<p>8</p>  <p>USB Data cable(optional)</p>

*Supplied accessories may vary by region.

CONTROLS AND FUNCTIONS



CONTROLS AND FUNCTIONS

1 Record/Shutter/OK/[]

When the unit is on Recording, press it for stop Recording.

When it is at Camera Mode, press it for photo shooting.

When it is at Playback Mode, press it for playback pause and play.

When it is at Menu Setting, press it for activating the selected OSD menu item.

2 Power/[]

Turn on/off the unit.

3 AV Output Port

4 USB Port

5 LED Lamp

6 Speaker

7 Light Indicator

- Steady blue - Unit is powered off and is charging.
- Steady pink - Unit is Standby Mode, Camera Mode or Playback Mode.
- Steady red - Unit is at Standby Mode but not charging.
- Flashing red - Unit is on Recording but not charging.
- Flashing between blue and pink - Unit is on Recording and charging.

8 Arrow Keys/[,]

When the On-Screen Display (OSD) menu is activated, it is used as directional arrows to select the desired menu items.


9 SOS Emergency File Lock/[]

When the unit is on recording, press it for file lock.

10 Microphone

11 Menu/[]


Turns on the On-Screen Display (OSD) menu, Exits and saves menu setting. It is not activated when the unit is on recording.

Please press [] to stop recording and back to Standby Mode.

12 Mute/[]

Press [] until  icon appears during recording, the record audio turns off.

13 Mode/[**M**]

It is not activated when the unit is on recording. Please press [] to stop recording and back to Standby Mode.

Toggle the unit among "Camera Mode" "Playback Mode" and "Standby Mode".

14 2.7" TFT Display Screen

15 HDMI Output Slot

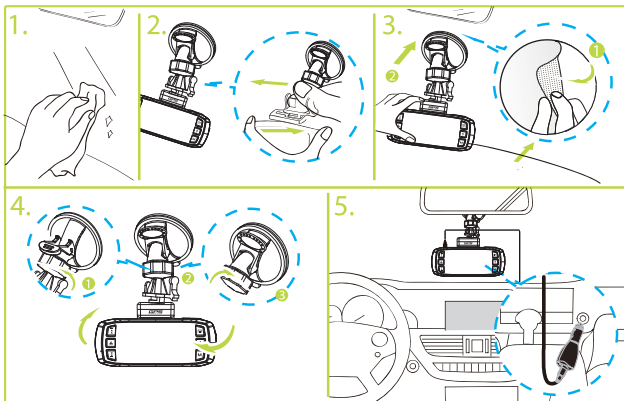
16 Reset Key

Reset to Manufacture Settings.

17 Micro SD Slot

Required a micro SDHC card, class 6 or above Support 8~32GB.

INSTALLATION AND CONNECTION



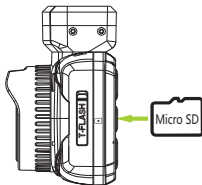
NOTE:

- Assemble the unit on to the bracket and mount the bracket on to the windshield glass.
- Only use the car charger provided by manufacture, others might cause malfunctions or danger.
- Please cautiously select the location where the unit will be mounted, do not mount the unit in places that may obstruct the driver's view or affect the normal operation of the airbag.
- If grease, fingerprints, or blots are found on the external/internal windshield of the car, please wipe it clean or install the unit on an unaffected area. Blots may worsen the recording quality or may cause the bracket to be unstable.

GETTING STARTED

1. Insert a memory card (sold separately)

- Please insert a micro SDHC card with class 6 or above, into the slot located on the side of the unit.
- Be sure to format the SD card before the initial use. Press [RECALL] twice to enter System Settings, [▶▶] to Format, and press [OK/ENTER] to start format.
- * This Camera supports to 32GB Micro SD Card. Please contact with your local dealer for purchase information.
- * Do not remove the memory card during recording and firmware update.



2. Turning the power on / off

- Press [POWER] button to turn the unit on.
- To turn the unit off, press the [POWER] button again.

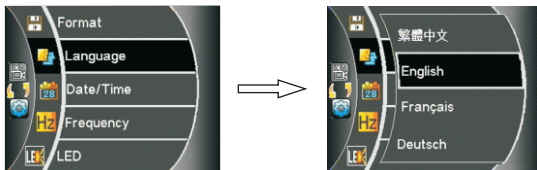
** After the unit has been installed in your car, connect the car power adapter and start the engine; the unit will automatically turn on.*

GETTING STARTED

3. Select language

- Press [] twice to enter system settings, [] to Language.
- Press [] .
- Press [] or [] to move to Language, and then press [] to select the desired language.

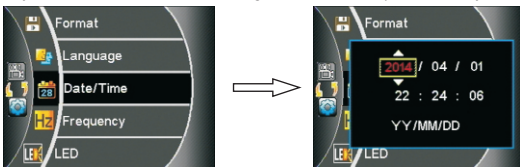
* [] is not activated when the unit is on Recording Mode, please press [] to stop recording and return to Standby Mode.



4. Setting the date and time

- Press [] Twice to enter System settings, [] to Date/Time.
- Press [] .
- Press [] / [] , then select [] to set Year, Month, Day, Time, and Format fields.
- Press [] .

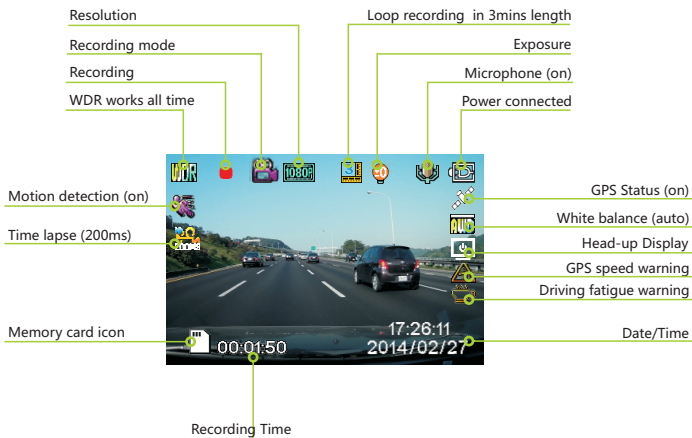
* Automatically time calibration once GPS signal connected. (Activated by GPS)



GETTING STARTED

5. Video Recording

- When the car engine is started, the unit will automatically start video recording (it is mandatory to insert a micro SDHC class 6 memory card)
- When it is not connected to the car charger, press [⏻] button to turn on the unit, and press [⏻/⏸] button to start video recording.

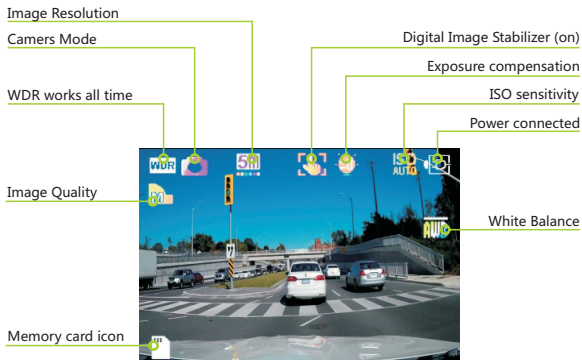


* The blinking satellite logo means GPS signal lost. The Standby speed display and GPS speed Warning functions are only available when connect GPS signal.

GETTING STARTED

6. Taking Photos

- Press [**M**] once to Camera Mode..
- Press [**⏎/⏏**] to take a picture.
- * [**M**] cannot be activated when the unit is on Recording Mode, please press [**⏎/⏏**] to stop recording and return to Standby Mode.



GETTING STARTED

7. Playback Mode

- Select the preview/next photo/movie.
Press **[M]** twice to enter Playback Mode.
Press **[◀◀]** / **[▶▶]** to select the photo or movie clip you want to playback.
 - Starting movie playing back.
Press **[▶/⏸]** to playback.
Press **[◀◀]** and **[▶▶]** button to navigate.
Press **[▶/⏸]** to pause it.
Press **[M]** to return to the Playback Mode.
 - Delete, Protect and Slide Show.
Press **[🗑]** .
Press **[◀◀]** / **[▶▶]** to select Delete, Protect, Slide Show.
Press **[▶/⏸]** to confirm.
Press **[🗑]** to exit menu.
- * The SOS locked video files will be deleted if the user selects "Format Card".





INTRODUCTION OF OTHER FUNCTIONS

- **Loop Recording (default)**

Loop Recording can be set at 2/3/5 minutes, it means that the video clip intervals will be set at 2/3/5 minutes long and after memory card is full, the oldest video clips will be deleted and new video clips will take its place.

If Loop Recording is turned off, it will stop recording when the memory card is full.

- **G-Sensor (default at Middle)**

When the internal G-Sensor detects situations like an impact, intense bumps or hard brakes during Recording Mode, the unit will automatically lock the current recording to avoid being replaced by loop recording.

- **Motion Detection**

In Motion Detection Mode, the surrounding of where the car is parked will be recorded taking the least amount of storage space. Recording will automatically be turned off after 10 seconds if nothing happens during the monitor mode. Once there is movement, the unit will start recording immediately.

* The Motion Detection Mode requires the camera to be connected to a constant power supply.

When Motion Detection Mode is activated, Monitor Mode/Emergency Recording Mode and the G-Sensor function will automatically be turned off.

- **Plate Stamp**

Enter your license plate number or desired input, and it will be displayed on the video footage.

INTRODUCTION OF OTHER FUNCTIONS

- **GPS Track (only available when connect with GPS signal)**

Display the driving route with Google Maps.

- **Password settings**

It allows password owner to restrain drivers or others from operating settings, modifying or deleting the video and picture data files.

- **Head Up Display (only available when connect with GPS signal)**

Current speed and compass of the vehicle will be displayed on the screen once the GPS signal is detected.

- **GPS Speed Warning (only available when connect with GPS signal)**

When the car speed exceeds a preset speed limit, the warning signal is shown to alert the drivers to slow down the driving speed.

* GPS Speed Warning is only activated under the “Standby Speed Display” turns on.

- **Image Rotation**

This feature will flip the screen 180 degree allowing for other recording options.

- **Time-Lapse Photography**

To capture a frame every 200mS/500mS/1 seconds/5 seconds.

* It requires the camera to be connected a constant power supply.

ON-SCREEN DISPLAY (OSD) MENUS

Main	Sub Menu	Options	
[MODE]	[UP]/[DOWN]-[OK]	[UP]/[DOWN]-[OK]	
Standby Mode	Recording Setting	WDR	On
		Resolution	1080FHD/720P/720P 60FPS/WVGA/VGA
		Exposure	+3/+2/+1/0/-1/-2/-3
		White Balance	Auto/Daylight/Cloudy/Tungsten/Fluorescent
		Record Audio	Off/On
		Date Stamp	Off/On
		Loop Recording	off/2 Minutes/3 Minutes/5 Minutes
		Gsensor	Off/High/Middle/Low
		Motion Detecion	Off/On
		Plate Stamp	
		Driver Fatigue Warning	Off/1H/2H/3H/4H
		GPS Track	Off/On
		Standby speed display	Off/15 Seconds/1 Minute/3 Minutes
		GPS Speed Warning	Off/40/60/80/100/120
		World Time Zone	
	System Setting	Password Setting	
		Speed Unit	KMH/MPH
		Image rotation	Off/On
		Time Lapse	Off/200M S/500M S/1S/5S
		Format	Micro-SD Card
		Language	Support Multiply Language
		Date/Time	
		Frequency	50Hz/60Hz
		LED	Off/On
		Beep Sound	Off/On
		Screen Saver	Off/3 Minutes/5 Minutes/10 Minutes
		TV Mode	PAL/NTSC
Speed Stamp	Off/On		
Version	<i>firmware Version</i>		
Default Setting	Retur menu setting to decaults-Cancel/OK		

ON-SCREEN DISPLAY (OSD) MENUS

Main Menu	Sub Menu	Options	
[MODE]	[UP]/[DOWN]-[OK]	[UP]/[DOWN]-[OK]	
Camera Mode	Camera Setting	WDR	On
		Image Size	12M/10M/8M/5M/3M/2MHD/VGA/1.3M
		Color	Normal/Black & White
		Anti-Shaking	Off/On
		Capture Mode	Single/2S Timer/5S Timer/10S Timer
		White Balance	Auto/Daylight/Cloudy/Tungsten/Fuorescent
		ISO	Auto/100/200/400
		Exposure	+3/+2/+1/0/-1/-2/-3
		Date Stamp	Off,Date,Date/Time
		Quality	Fine/Normal/Economy
Playback Mode		Sharpness	Strong/Normal/Soft
		Delete	Delete Current/Delete All
		Protect	Lock Current/Unlock Current/Lock All/Unlock All
		Slide Show	2 Seconds

ADDITIONAL INFORMATION

HOW TO PLAYBACK ON COMPUTER

If the camera you purchased with GPS logger, please download the DOD GPS player with the CD-ROM (included), or go to <http://www.dod-tec.com/> to download and install the DOD GPS player.

If the camera you purchased without GPS logger, please go to <http://www.videolan.org/vlc/> to download and install the VLC PLAYER.

HOW TO PLAYBACK ON OTHER DEVICES

There are AV OUT and HDMI OUT slots on the unit for Playback Mode Please plug the AV or HDMI cable to the unit and connect the other end to the video/ audio equipment.

* It requires the camera to be connected to a constant power supply.

FIRMWARE UPGRADE

Please visit DOD Tech official website (<http://www.dod-tec.com>) to download the latest firmware for your unit. Before download the updated firmware, please navigate to the System Menu and select "Version" to view the current firmware version.

- Connect the micro SD card into the computer.
- Access DOD Tech website (<http://www.dod-tec.com>) to download the latest software to the SD Card.
- Insert the micro SD card to the unit
- Connect the unit with the external power supply*. The unit will automatically turn on, and running about 40 seconds for firmware upgrading.
- The unit will automatically reboot once finished the firmware update.
- Be sure to format the SD memory card once finished firmware update.

* *Recommend connecting the unit with the external power supply instead of using the built-in battery, it might cause the firmware update failure due to power interruption.*

